



**Come franchise
with us**



FRANCHISE SALES SOLICITATION DISCLAIMER: This information is not intended as an offer to sell or the solicitation of an offer to buy a franchise. It is for informational purposes only. If you are a resident of a U.S. state or a country or wish to operate a franchise in a U.S. state or country that regulates the offer or sale of franchises or business opportunities, we will not offer you a franchise until we have complied with any applicable pre-sale registration and disclosure requirements in your jurisdiction. Contact Red Mango FC, LLC, located at 14860 Montfort Drive, Suite 150, Dallas, TX 75254, to request a copy of their FDD. RESIDENTS OF NEW YORK: This advertisement is not an offering. An offering can only be made by a prospectus filed first with the Department of Law of the State of New York. Such filing does not constitute approval by the New York Department of Law. RESIDENTS OF MINNESOTA: MN Franchise Registration Number: 10193. RESIDENTS OF FLORIDA: FL Advertising Number: BF47541. RED MANGO name, design and related marks are trademarks of Red Mango, LLC © 2024 Red Mango, LLC. All Rights Reserved.



Table of Contents

- 1 Introduction
- 2 Our History
- 3 Our Product Pillars
- 4 Our Menu
- 5 Social Media
- 6 Our Locations
- 7 Our Formats
- 8 Qualifications
- 9 Business Model & Incentives
- 10 Meet the Team

1 Introduction

There is growing consumer demand for healthier and nutritionally dense food. Over 63% of consumers want to eat healthily, most if not all the time.

The Frozen Yogurt Market was valued at US\$1.69 Billion in 2021 with the total revenue estimated to grow by 4.1% from 2022 to 2027, reaching nearly US\$ 2.15 Billion.

Fortune Business Insights 2023



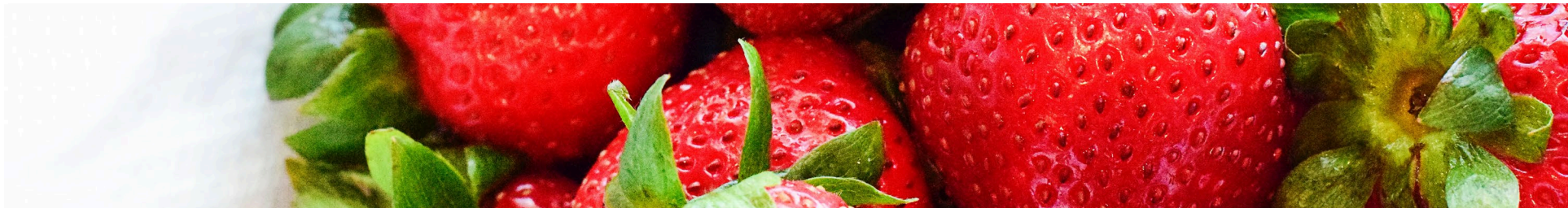
2 Our History

2007

Opened our first restaurant
in Los Angeles in 2007.

50+

Menu Items from frozen
yogurt to smoothies.



3 Our Product Pillars



Superior Smoothies



Frozen Yogurt



Fresh cold-squeezed juices

3 Frozen Yogurt

RED MANGO Café® will offer a wide selection of our famous all-natural frozen yogurt and fresh fruit yogurt parfaits.

Our Original Tart Yogurt is:

- 100% all-natural and nonfat
- Made with the highest quality ingredients. No preservatives or artificial flavors
- Certified gluten-free & kosher
- Real yogurt (one of the top five healthiest foods)
- Certified by the Yogurt Association's Live & Active Culture Seal



3 Superior Smoothies

Freshly made with real fruit

- No syrups
- No concentrates
- No purees
- From the menu or made to order



3 Fresh Cold-Squeezed Juices

RED MANGO Cafe® has expanded its offering in a hot and growing category, introducing fresh cold-squeezed juices, served up at a stylish juice bar.

Perfect for health-conscious customers, this new revenue stream broadens the brand and elevates the customer experience with enhanced store design and a larger menu.

- Easy way to access nutrition the human body needs
- Freshly made with fruits and vegetables
- Off the menu or made to order
- Immediately cooled
- Bottled and served with air/tamper proof lid



4 Our Menu

FROZEN TREATS

50¢ per oz.
all flavors & toppings
25-40 cal./oz.



BC **Live & Active Cultures**
Made with 100% Natural Yogurt

treat yourself well®

FROZEN TREATS



SMALL (6 oz.)
\$3.45 120-150 cal.

REGULAR (12 oz.)
\$4.45 190-250

LARGE (16 oz.)
\$5.49 280-370

QUART (32 oz.)
\$11.95 560-740

TOPPINGS
\$0.75 for one
\$0.50 each additional

FRUIT+YOGURT PARFAITS

MIXED BERRY \$5.95 280 cal.
Strawberry, Blueberry, Banana, Granola & Nonfat Frozen Yogurt

TROPICAL \$5.95 320
Mango, Pineapple, Banana, Granola & Nonfat Frozen Yogurt

BC **Live & Active Cultures**
Made with 100% Natural Yogurt

4 Our Menu


SMOOTHIES

	16 oz.	24 oz.	cal.
FRUIT & YOGURT			
STRAWBERRY BANANA <small>Strawberry, Banana, Yogurt</small>	\$5.45	\$6.45	220/290
TROPICAL MANGO <small>Mango, Pineapple, Yogurt</small>	\$5.45	\$6.45	220/280
BERRY BANANA <small>Strawberry, Banana, Blueberry, Yogurt</small>	\$5.45	\$6.45	230/310
BODY BALANCE PRE-BOOSTED	16 oz.	24 oz.	cal.
BANANA PEANUT BUTTER PROTEIN <small>Banana, Peanut Butter, Granola, Yogurt, Energy Boost</small>	\$5.95	\$6.95	470/620
STRAWBERRY ENERGIZER <small>Strawberry, Banana, Yogurt, Energy Boost</small>	\$5.95	\$6.95	230/290
SUPER PEANUT BUTTER CUP <small>Peanut Butter, Banana, Yogurt, Chocolate, Metabolic Boost</small>	\$5.95	\$6.95	450/600

	16 oz.	24 oz.	cal.
GREEN SMOOTHIES DAIRY FREE			
APPLE GINGER KALE <small>Banana, Ginger, Kale, Apple Juice</small>	\$5.95	\$6.95	160/240
CITRUS MANGO GREENS <small>Mango, Spinach, Banana, Orange Juice</small>	\$5.95	\$6.95	170/250
SPK SMOOTHIE <small>Spinach, Pineapple, Kale, Banana, Pineapple Juice</small>	\$5.95	\$6.95	150/220

MILK SUBSTITUTIONS AVAILABLE


OUR SMOOTHIES ARE SWEETENED WITH PURE STEVIA




PROTEIN BOOSTS \$1.00

SUPERFOOD BOOSTS \$.75 ea.

<p>Whey Promote muscle development (13g protein per serving)</p>	<p>Chia Seeds An ancient grain packed with fiber, protein & omega-3 fatty acids</p>	<p>Metabolic Fit 360™ Rev up your metabolism with this protein blend (12g protein per serving)</p>
<p>Pumpkin Flaxseed Granola Delicious and satisfying granola adds fiber and nutrients</p>	<p>Fresh Kale A nutrient-dense superfood loaded with antioxidants</p>	<p>Acai Berry Nutritional powerhouse linked to heart health, immunity and anti-aging</p>
<p>Multivitamin Blend of 18 essential vitamins and minerals</p>	<p>Fresh Spinach A superfood to nourish your eyes, bones and heart</p>	<p>Energy Fight fatigue, enhance focus and increase stamina</p>
<p>Immunity Build immunity with this powerful blend of antioxidants and vitamins</p>		





red mango®

4 Our Menu

FRESH JUICE

<p>DAILY DETOX 16 oz. \$6.95</p> <p>SWEET GREENS cal.</p> <p>BEAUTY & THE GREENS 120 Apple, Kale, Lemon, Spinach, Cucumber, Celery</p> <p>SWEET GREEN ZING 160 Apple, Kale, Lemon, Spinach, Cucumber, Celery, Ginger</p> <p>ROOTS & FRUITS</p> <p>24 CARROT KALE 110 Carrot, Kale, Orange Juice</p> <p>FRED & GINGER 180 Apple, Ginger, Lemon, Beet</p> <p>CITRUS BEETS 190 Beet, Orange Juice, Apple, Lemon, Pineapple</p> <p>POWER UPS</p> <p>SWEET KALE IMMUNITY 150 Kale, Apple, Carrot, Orange Juice, Lemon</p> <p>THE HEART BEETER 150 Beet, Carrot, Apple, Ginger, Spinach, Lemon</p> <p>SPICY COLD BURNER 180 Apple, Kale, Carrot, Ginger, Orange Juice, Lemon, Cayenne</p>	<p>EASY GREENS 16 oz. \$6.95</p> <p>PERFECT FOR EVERYONE cal.</p> <p>TROPICAL DETOX 220 Pineapple, Apple, Cucumber, Mint</p> <p>COOL PINEAPPLE ZEN 230 Pineapple, Cucumber, Apple, Lemon, Mint</p> <p>SWEET PINEAPPLE GREENS 260 Pineapple, Spinach, Mint</p> <p>THE "SPK" SPECIAL 280 Spinach, Pineapple, Kale, Mint</p> <p>SIMPLY JUICE 16 oz. \$4.45</p> <p>YOUR CHOICE OF 1-3 INGREDIENTS cal.</p> <p>APPLE 150-225</p> <p>ORANGE</p> <p>CARROT</p> <p>BEET</p>	<p>RAW6™ 6 pk. \$42.95</p> <p>THE 1-DAY JUICE PLAN cal.</p> <p>RAW6 RESTORE 685</p> <p>RAW6 REVIVE 845</p> <p>RAW6 RESIST 665</p> <p>Additional nutrition information available upon request. 2000 calories a day is used for general nutrition advice, but calorie needs vary.</p>
---	---	--




RED MANGO name, design and related marks are trademarks of Red Mango, LLC © 2016 Red Mango, LLC. All rights reserved.

POWER BOWLS

GET YOUR DAILY FILL OF GET UP AND GO.™

NEW	#1 THE PINK BOWL \$8.99	
	BASE BLEND: dragonfruit (pitaya), apple juice, banana	
	TOPPED WITH: granola, banana, blueberries	380 cals
NEW	#2 COCONUT ACAI BOWL \$8.99	
	BASE BLEND: acai, coconut, blueberries, banana	
	TOPPED WITH: granola, banana, pineapple	610 cals
NEW	#3 BERRIES & ACAI BOWL \$8.99	
	BASE BLEND: acai, apple juice, blueberries, banana	
	TOPPED WITH: granola, banana, strawberries	410 cals
NEW	#4 YOATS & BERRIES BOWL \$5.99	
	BASE BLEND: oatmeal, chia seeds, RED MANGO® non-fat yogurt, coconut milk	
	TOPPED WITH: granola, banana, strawberries	450 cals
NEW	#5 THE HAWAIIAN BOWL \$8.99	
	BASE BLEND: coconut, cream of coconut, banana	
	TOPPED WITH: granola, banana, pineapple, coconut	610 cals
	#6 PB POWER BOWL \$8.99	
	BASE BLEND: acai, banana, almond milk	
	TOPPED WITH: granola, banana, blueberries, peanut butter	490 cals
	#7 CHOCO-NUT DREAM BOWL \$8.99	
	BASE BLEND: acai, banana, almond milk	
	TOPPED WITH: granola, banana, strawberries, chocolate hazelnut spread	490 cals
	#8 TOTALLY TROPICAL BOWL \$8.99	
	BASE BLEND: acai, banana, almond milk	
	TOPPED WITH: granola, pineapple, mango, shredded coconut	430 cals



PICTURED: **NEW** THE PINK BOWL

RED MANGO name, design and related marks are trademarks of Red Mango, LLC © 2016 Red Mango, LLC. All rights reserved.

4 Our Menu

BREAKFAST POWER FLATBREAD \$4.95

UNDER 500 CALORIES

BACON AVOCADO POWER FLAT
 KALE, GARDEN VEGETABLE EGG WHITE PATTIES, GUACAMOLE, BACON CAL 450

***BACON EGG & CHEESE POWER FLAT** *LIKE IT SPICY? ASK FOR IT WITH HOT SAUCE!
 KALE, GARDEN VEGETABLE EGG WHITE PATTIES, CHEDDAR CHEESE, BACON CAL 480

WESTERN EGG POWER FLAT
 KALE, GARDEN VEGETABLE EGG WHITE PATTIES, CHEDDAR, CORN, BLACK BEANS, BBQ SAUCE CAL 420

SIGNATURE SANDWICHES

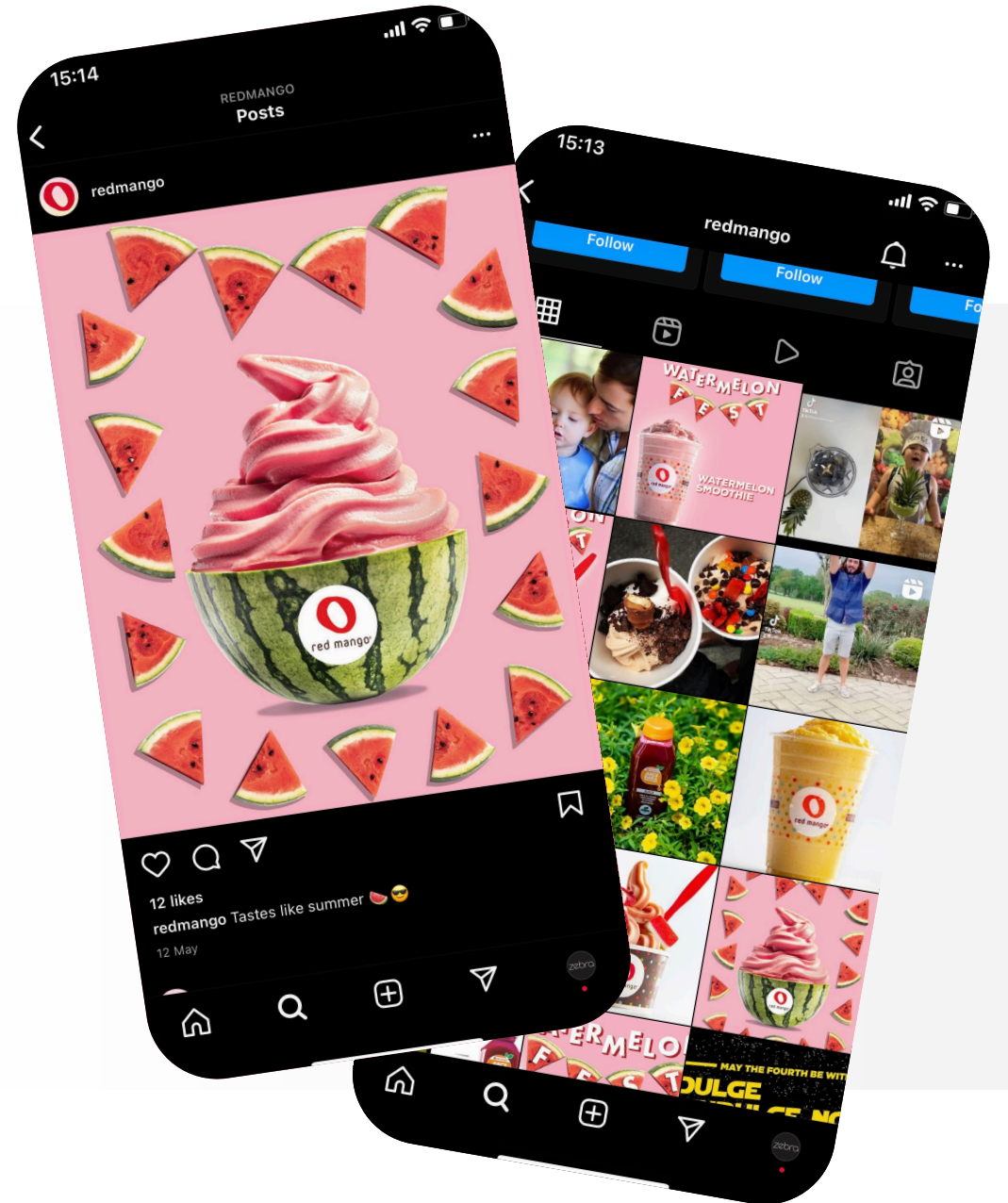
500 Calories or Less ✔ Vegetarian Options

WARM & TOASTY FLATBREADS \$4.50	COOL SALAD FLATBREADS \$4.50	GOURMET PB&J \$3.95
HAWAIIAN TERIYAKI CHICKEN 440 cal. Grilled Chicken Breast, Cheddar, Pineapple, Carrots, Teriyaki Glaze	CHICKEN CAESAR 390 cal. Grilled Chicken Breast, Spinach, Kale, Parmesan Cheese, Roasted Garlic Caesar Dressing	✔ FRESH BERRY GRILLED PB&J 500 cal. Whole Grain Wheat Berry Bread, Jam, Fresh Strawberries & Blueberries, Natural Peanut Butter
CHICKEN APPLE PESTO 480 cal. Grilled Chicken Breast, Cheddar, Basil Pesto, Apple Chips	✔ GREEK GODDESS 380 cal. Spinach, Kale, Cucumber, Corn, Feta Cheese, Guacamole, Lemon Basil Vinaigrette	✔ GRILLED BANANA PB&J 470 cal. Whole Grain Wheat Berry Bread, Jam, Fresh Banana, Natural Peanut Butter
BUFFALO CHICKEN 420 cal. Grilled Chicken Breast, Cheddar, Buffalo Sauce, Ranch Dressing	SOUTHWEST BBQ 350 cal. Grilled Chicken Breast, Spinach, Kale, Corn, Black Beans, Ranch Dressing, BBQ Sauce	✔ GRILLED BANANA DELIGHT 500 cal. Whole Grain Wheat Berry Bread, Jam, Fresh Banana, Chocolate Hazelnut Spread (Hold the Peanut Butter!)
✔ MEDITERRANEAN PESTO 420 cal. Hummus, Cucumber, Carrots, Corn, Pesto	<small>Additional nutrition information available upon request. Daily calorie requirement of 2,000 calories a day is used for general nutrition advice, but calorie needs vary.</small>	



5 Social Media

Customers can share their store experiences and unique flavor combinations on our various social media outlets all through our branded app and mobile web.

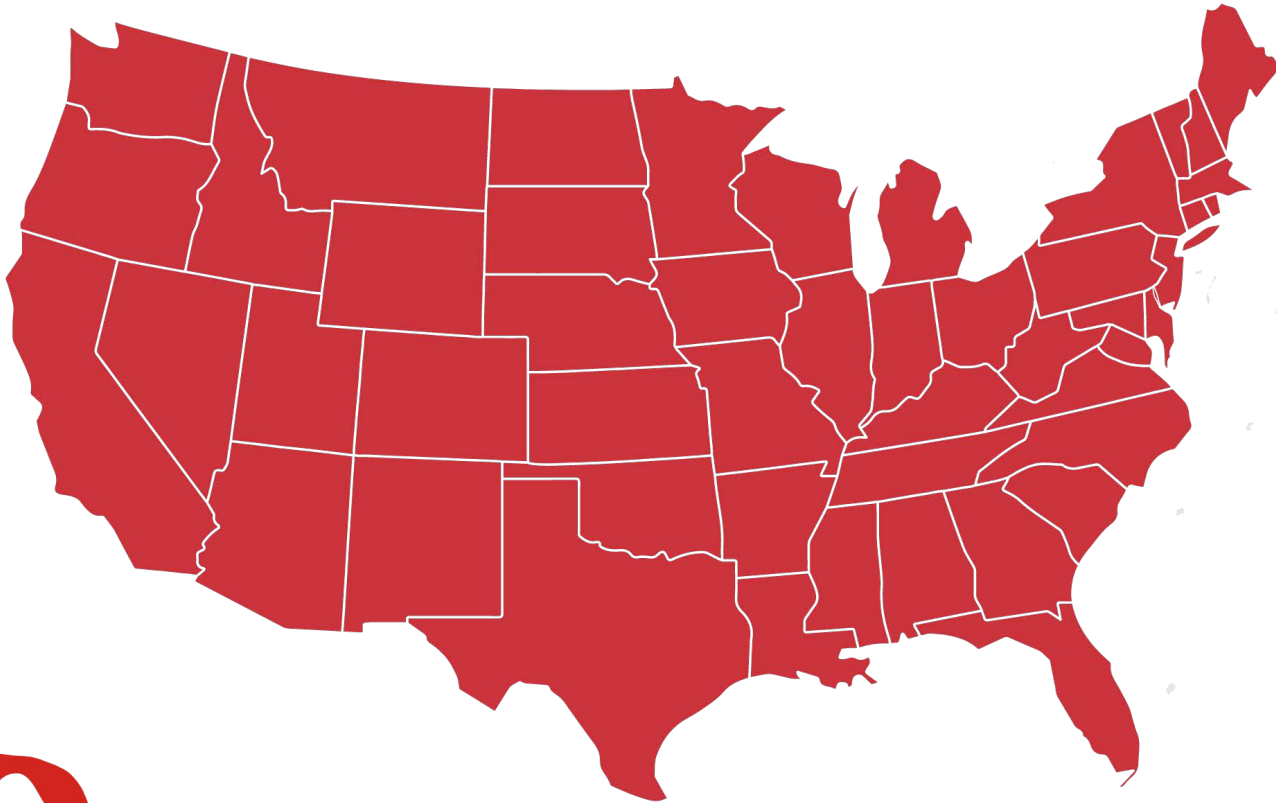


6

Our Locations

Over 60 locations across:

○ The United States



7 Our Formats

Traditional

Market Entry/ Flagship/ High Profile 1,500ft²
Core Store 1,200ft²

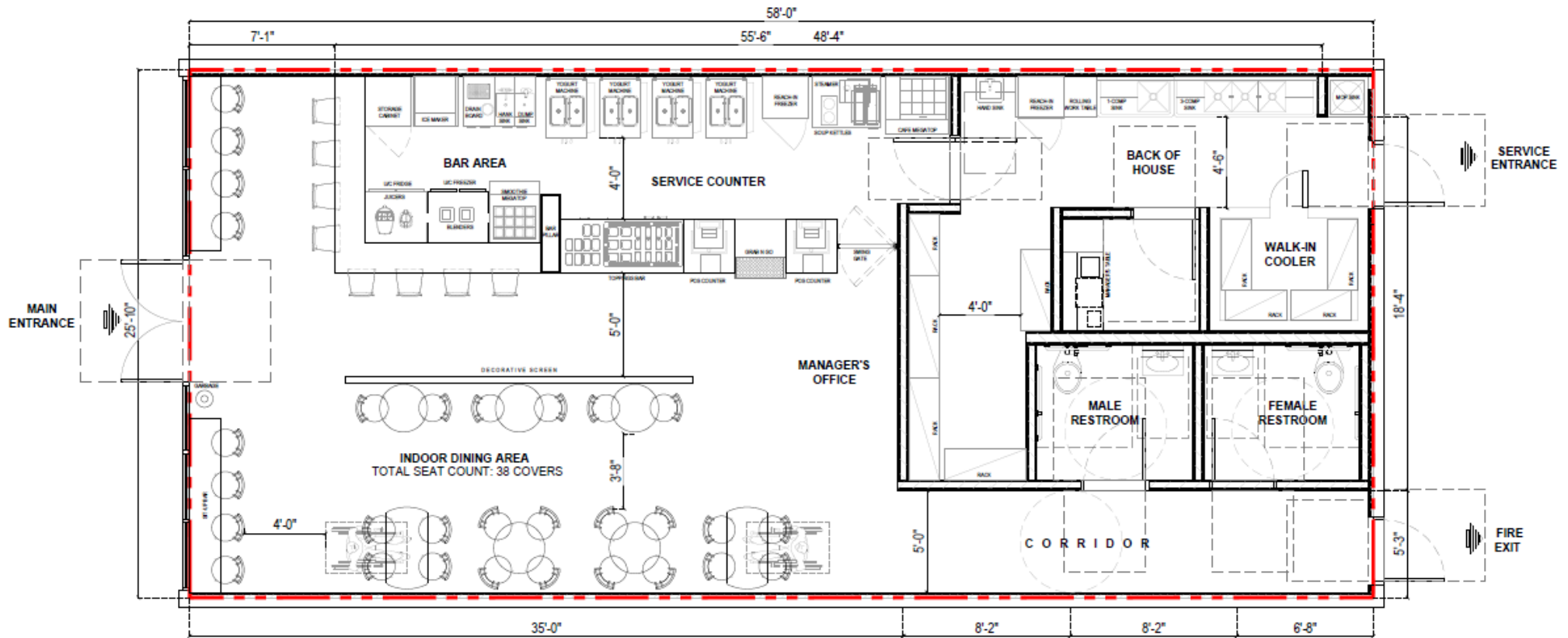
Non-Traditional

Counter Kiosk 350ft²
Counter with Seating 800ft²



7 Traditional Format- 1,500ft²

Market Entry/ Flagship/ High Profile



red mango

YOGURT & SMOOTHIES

yogurt • smoothies • juice • salads • wraps • flatbreads • yogurt • smoothies • juice

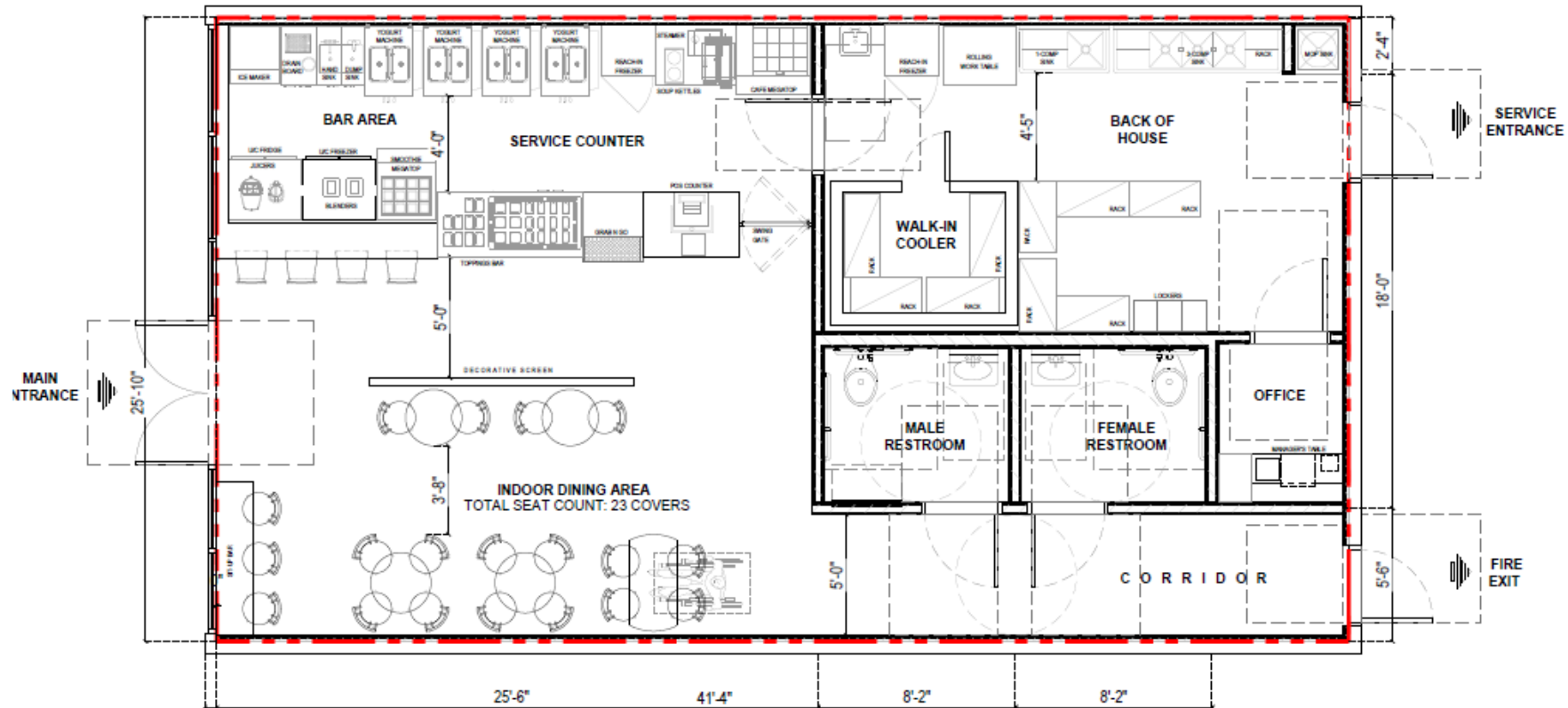
yogurt • smoothies • juice • salads • wraps • flatbreads • yogurt • smoothies • juice • salads

red mango

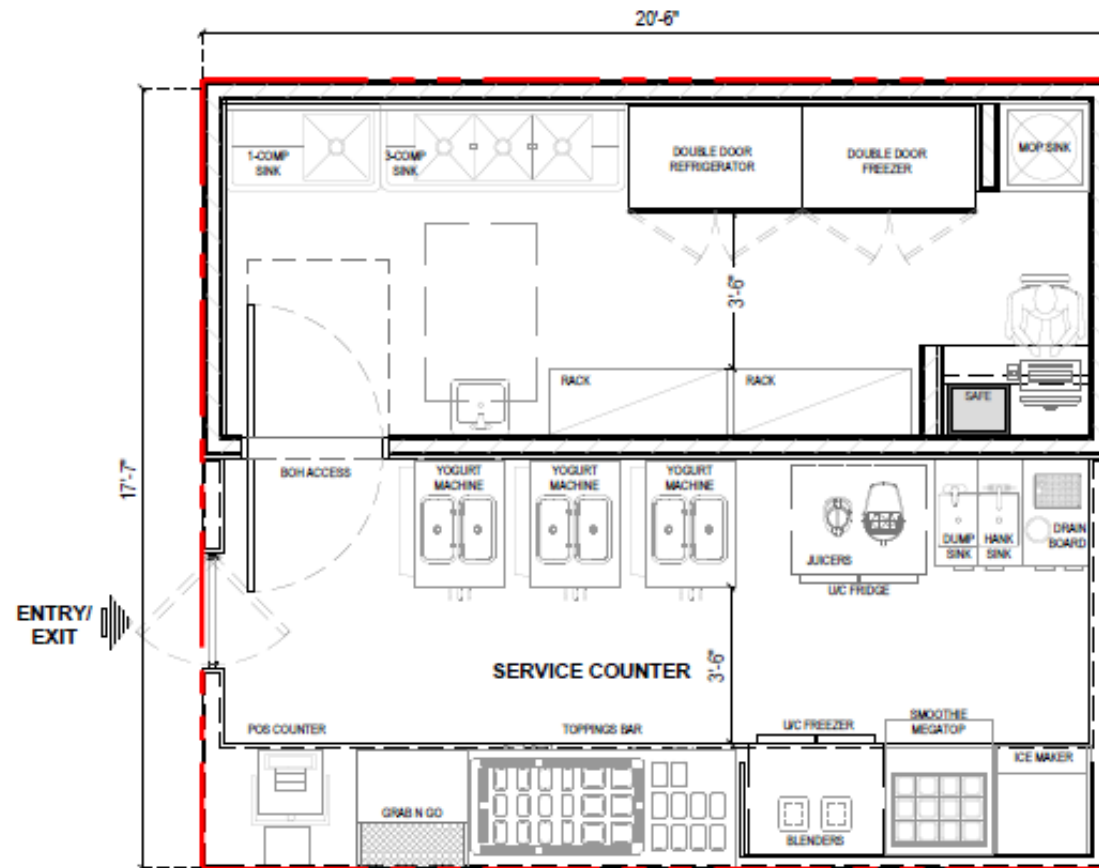
SPICY
SWEET
SALAD

USE ONLY QUALITY INGREDIENTS
KALORITASI RENDAH DAN BERGEMUKA
SANTAP DENGAN BERSAMA-SAMA
KITA BERSAMA-SAMA MELAKUKAN PERUBAHAN
DARI MASA KE MASA
DENGAN BERKONTRIBUSI KE BERSAMA-SAMA
MELAKUKAN PERUBAHAN
BERSAMA-SAMA MELAKUKAN PERUBAHAN

7 Traditional Format- 1,200ft² Core Store



7 Non-Traditional- 365ft² Counter/ Kiosk





red mango

YOGURT & SMOOTHIES

yogurt · smoothies · juice · salads · wraps · flatbreads yogurt · smoothies · juice · salads · wraps · flatbreads yogurt · smoothies · juice · salads · wraps · flatbreads yogurt · smoothies · juice

SMOOTHIES		SMOOTHIES		SMOOTHIES	
Fruit & Yogurt	Berry Salads	Green Smoothies	Green Smoothies	Green Smoothies	Green Smoothies
Apple & Pear Banana & Strawberry Mango & Pineapple Peach & Blueberry Pineapple & Orange Strawberry & Orange Tropical Vanilla & Orange	Berry & Yogurt Berry & Yogurt Berry & Yogurt Berry & Yogurt Berry & Yogurt Berry & Yogurt Berry & Yogurt Berry & Yogurt	Apple & Pear Banana & Strawberry Mango & Pineapple Peach & Blueberry Pineapple & Orange Strawberry & Orange Tropical Vanilla & Orange	Apple & Pear Banana & Strawberry Mango & Pineapple Peach & Blueberry Pineapple & Orange Strawberry & Orange Tropical Vanilla & Orange	Apple & Pear Banana & Strawberry Mango & Pineapple Peach & Blueberry Pineapple & Orange Strawberry & Orange Tropical Vanilla & Orange	Apple & Pear Banana & Strawberry Mango & Pineapple Peach & Blueberry Pineapple & Orange Strawberry & Orange Tropical Vanilla & Orange

POWER BOWLS

Apple & Pear
Banana & Strawberry
Mango & Pineapple
Peach & Blueberry
Pineapple & Orange
Strawberry & Orange
Tropical
Vanilla & Orange

red mango

YOGURT & SMOOTHIES

CAYENNE: ALKALIZES, STIMULATES C
CLAMP, PROVIDES HYDRATION, LOWERS CHOLESTEROL

ORGANIC, YOU'RE WORTH IT WEATHERS STORMS!

HEMP SEEDS AND FLAX SEEDS PROVIDE OMEGA-3 AND ANTIOXIDANTS

CHA SEED: PROVIDES OMEGA-3 AND ANTIOXIDANTS HEMP FOR

KALE: POTENT HEALER AND ANTI-CANCER RHYTHM
HEMP SEEDS AND FLAX SEEDS PROVIDE OMEGA-3 AND ANTIOXIDANTS

COCONUT MANNA: PROVIDES HEALTHY, HEALING SUSTAINED RELEASE CARBS
DANDELION GREENS DETOXIFIES AND PROMOTES LIVER

APPLE JUICE



red mango

SMOOTHIES	SMOOTHIES	SMOOTHIES	FROZEN TREATS	POWER BOWLS
FRUIT & YOGURT Strawberry Banana Mango Peach Blueberry Lemon Peach Mango	GREEN SMOOTHIES Green Superfood Green Superfood Green Superfood Green Superfood	SMOOTHIES Green Superfood Green Superfood Green Superfood Green Superfood	FROZEN TREATS Mango Peach Strawberry Banana Blueberry Lemon Peach Mango	POWER BOWLS Mango Peach Strawberry Banana Blueberry Lemon Peach Mango

yogurt • smoothies • juice • salads • wraps • flatbreads • yogurt • smoothies • juice • salads • wraps • flatbreads • yogurt • smoothies •



6%
Royalty
plus 3% brand
development
fund contribution

\$30,000
Initial franchise fee

10 Year Term

\$350,000
Required Net
Worth

\$100,000
Required liquid
assets to
invest



8

Qualifications: Traditional Storefront for a Ten Year Term

Please refer to our current RED MANGO Franchise Disclosure Document for all franchise terms and conditions.

5 Year Term

\$15,000
Initial franchise fee

6%
Royalty plus 1%
brand development
fund contribution for
non-traditional
locations

8

Qualifications: Non-Traditional Storefront for a Five Year Term

Please refer to our current RED MANGO Franchise Disclosure Document for all franchise terms and conditions.

9 Franchise Opportunity

The top 33% of Red Mango stores had an average unit volume of \$610,657 in 2023.

* The bottom 33% of stores had an average unit volume of \$24,441. These stores are all non-traditional stores located in c-stores offering only frozen yogurt (1-2 machines) and limited toppings.

Please refer to Item 19 of the current RED MANGO Franchise Disclosure Document for any finance performance representations.



9 In Business for yourself, not by yourself

Comprehensive site selection, store design and vendor support

- Ongoing operations support and quality assurance visits
- Professional marketing support
- On location training
- Ongoing product and menu development



9 2024 Incentives

Single Unit Development:

Early Franchise Incentive Program

- Reduced First Year Royalties. In addition, for the first five (5) Franchise Agreements that are signed in 2024, the Royalty Fee will be waived for the first six (6) accounting periods of operation and will be reduced to 3% for the next six (6) accounting periods of operation (total of one (1) year).
 - Your Store must be opened for business within one (1) year of signing the Franchise Agreement.
 - If you are participating in the Red's Real Deal, you are not eligible to participate in any of the components of the Early Franchise Incentive Program.

Military Discount for Veterans

- 50% off Initial Franchise Fee for the first store opened.

Red's Real Deal

- If you qualify, you may participate in our Red's Real Deal incentive program which includes a Store purchasing program. Subject to other provisions specified in the Franchise Agreement, if you notify us within six months after opening that you want to sell the RED MANGO Traditional Store, we will agree to buy it from you for a purchase price up to \$275,000.
 - Offer is available to the first five (5) franchisees to have their franchise agreement fully signed and the initial franchise fee paid in full on or before September 30, 2024; you must build a RED MANGO Traditional Store within one (1) year of signing your Franchise Agreement and you must otherwise meet our financial and operating criteria for new franchisees.

Certain additional terms and conditions apply. See the 2024 RED MANGO Franchise Disclosure Document for full terms and conditions for all franchise incentive offers.



9 2024 Incentives

Multi Unit Development:

- If you are acquiring multi-unit development rights, we require you to commit to develop a minimum of three Stores.
- You will sign our Store Development Agreement and pay us a development fee at signing equal to the sum of initial franchise fees that correspond to the proposed development.
 - For the first Store, the initial franchisee will be the full price (i.e., \$30,000 for a Traditional Store or \$15,000 for a Non-Traditional Store); however, for each additional Store to be developed under the Store Development Agreement, the initial franchise fee will be reduced by 50% (i.e., \$15,000 for a Traditional Store or \$7,500 for a Non-Traditional Store).
 - For example, if you commit to develop five RED MANGO Traditional Stores, the development fee would be \$90,000 ($\$30,000 + (\$15,000 \times 4) = \$90,000$). If you are developing five RED MANGO Non-Traditional Stores, the development fee would be \$45,000 ($\$15,000 + (7,500 \times 4) = \$45,000$).
- Military veterans can receive 50% off of Initial Franchise Fees for the first store opened.
- Plus, if you are one of the first five (5) Franchise Agreements signed in 2024, you will receive reduced royalties for the first year of operation on the first Store under your development agreement if you open your Store within one year of signing your Franchise Agreement. See Early Franchise Incentive Program

Certain additional terms and conditions apply. See the 2024 RED MANGO Franchise Disclosure Document for full terms and conditions for all franchise incentive offers.



10 For more information

Contact Luke B. Mandola, Jr.
Phone 832-250-6083
Email luke.mandola@brixholdings.com

Address 14860 Montfort Dr,
Ste 150 Dallas, TX
75254

Website redmangousa.com/red-mango-better-for-you-franchise/

